

—  
THE  
**IMPERIAL**  
—  
CLIFTON

# CELEBRATIONS





---

# WELCOME

---

## AN ICONIC VENUE STEEPED IN HISTORY. THE IMPERIAL AT CLIFTON. THE NEXT CHAPTER.

It all started way back in the 1900s with a sizeable mining community looking for a drinking hole...from there an iconic venue was born, known for its clifftop location and dynamic history.

For decades, the Imperial Hotel was an important part of the coastal township of Clifton, both for the local mining and rail community, as well as for visitors to the region until it closed its doors in the early 2000s.

Sitting idle for almost 20 years, the venue was reinvented as The Imperial at Clifton in 2021 – a bespoke hospitality venue encompassing a restaurant, café and events space.

Embracing the historic roots, the venue brings to light the story of not only the iconic building, but also the town of Clifton. There's heritage features and historical interpretations everywhere you look – admire the original timber staircase, take a seat on the reinstated front terrace, cosy up to one of five original fireplaces and immerse yourself in the next chapter of this iconic venue.

---

THE  
**IMPERIAL**  
CLIFTON



---

# CELEBRATE

---

CELEBRATE MOMENTS AMONGST HISTORY

---

AN ICONIC ILLAWARRA LANDMARK

---

HISTORIC RESTORATION

---

A PICTURESQUE LOCATION

---

Regardless of the milestone,  
The Imperial at Clifton  
is the place to celebrate.

With multiple bespoke event spaces,  
there's a spot for every celebration -  
both large and small.





---

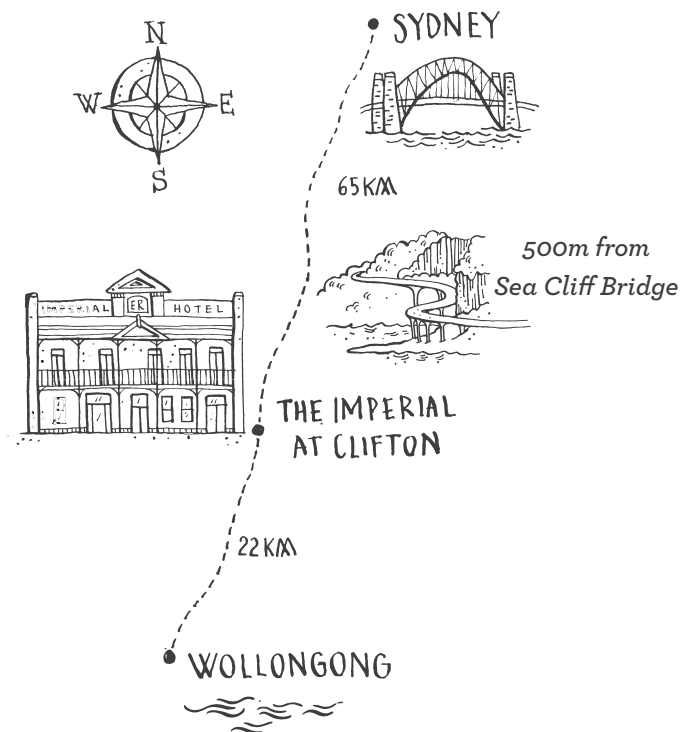
# LOCATION

---

## A DESTINATION IN ITSELF...

Just 500m from the famed Sea Cliff Bridge, the iconic venue is located in the township of Clifton on the tourist road known as the Grand Pacific Drive.

Perched on the clifftop above numerous neighbouring coastal towns and beaches, the venue boasts wide-reaching views of the Pacific Ocean and the escarpment; making The Imperial at Clifton a destination in itself.



---

# SPACES

---

## DRAPER & CO

Up to 110 guests

Original brick walls, dark timber floors together with floor to ceiling windows and dynamic views. Draper & Co is a solid mix of style and sophistication with a hint of relaxed coastal vibes. Spread over the entire top floor of the iconic venue, it's an unpretentious space that features views over the Pacific Ocean.

---

## DRAPER EAST

Up to 56 guests

Expect the comfort of Draper & Co but broken down into a smaller space that features floor-to-ceiling windows, an abundance of natural light and uninterrupted views of the Pacific Ocean.

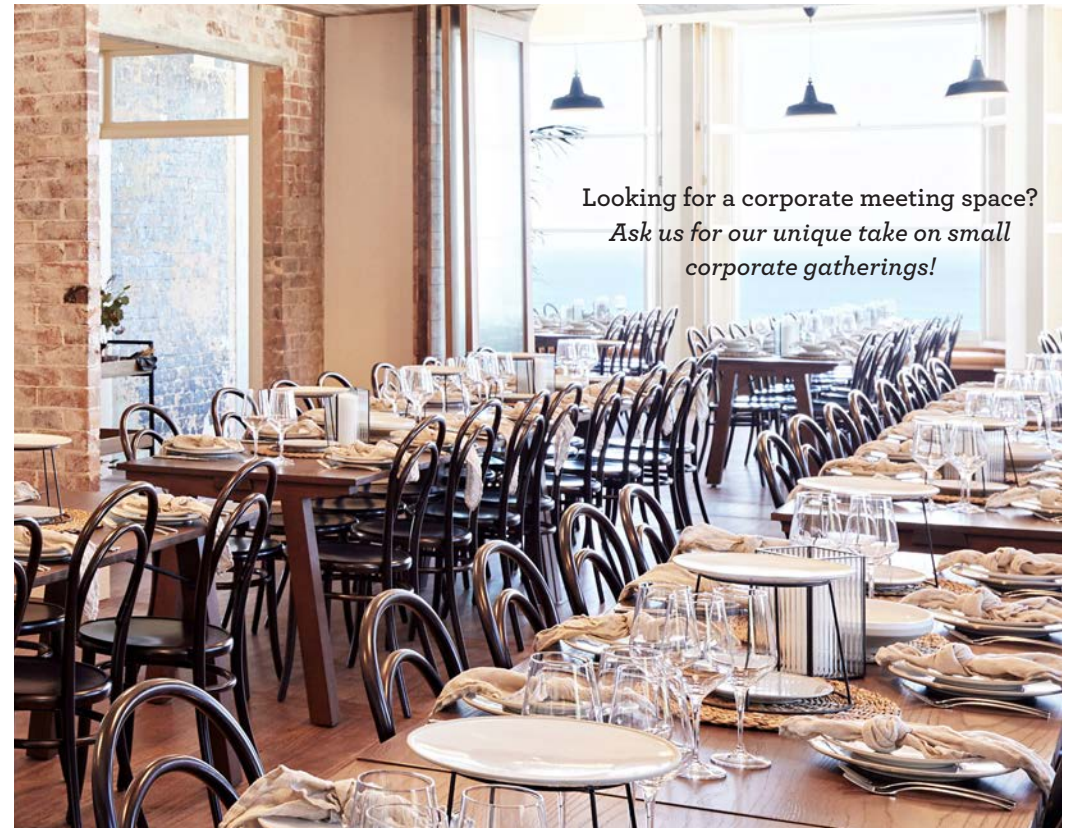
---

## DRAPER SOUTH

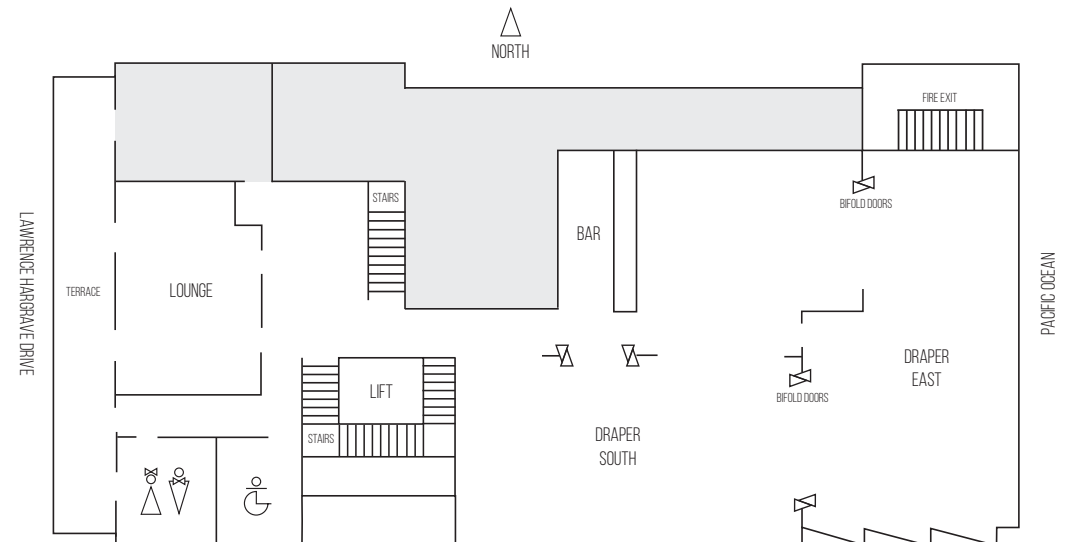
Up to 60 guests

Enjoy all that Draper & Co has to offer but just downsized for medium-sized groups. Featuring original brick walls and dark timber floors, it exudes a sense of warmth and elegance.

---



Looking for a corporate meeting space?  
*Ask us for our unique take on small corporate gatherings!*





---

# FOOD PACKAGES

---

## GRAZE

The stationary canapes; an assortment of bite-sized selections served on a styled food station. A centrepiece for your guests to mingle around.

1 x STATION

---

## SHARED TABLE

An abundant spread served family-style on guest tables creating a communal and interactive dining experience to graze (and daze!) on.

ENTRÉE + MAIN + SIDES

MAIN + SIDES + DESSERT

ENTRÉE + MAIN + SIDES + DESSERT

---

## TRADITIONAL

Refined individually-plated meals served alternate drop.

ENTRÉE + MAIN

MAIN + DESSERT

ENTRÉE + MAIN + DESSERT

---

## STATIONS

Our signature experience – customise your own dining experience with the theatre of styled food stations.

3 x STATIONS

---





---

# GRAZE

---

*Verb: to eat small amounts of food many times over.*

The stationary canapes; an assortment of bite-sized selections served on a styled food station. A centrepiece for your guests to mingle around.

Crispy tortilla chips with guacamole + salsa

Roasted tomato + fetta tartlets

Yakitori chicken skewers with soy glaze

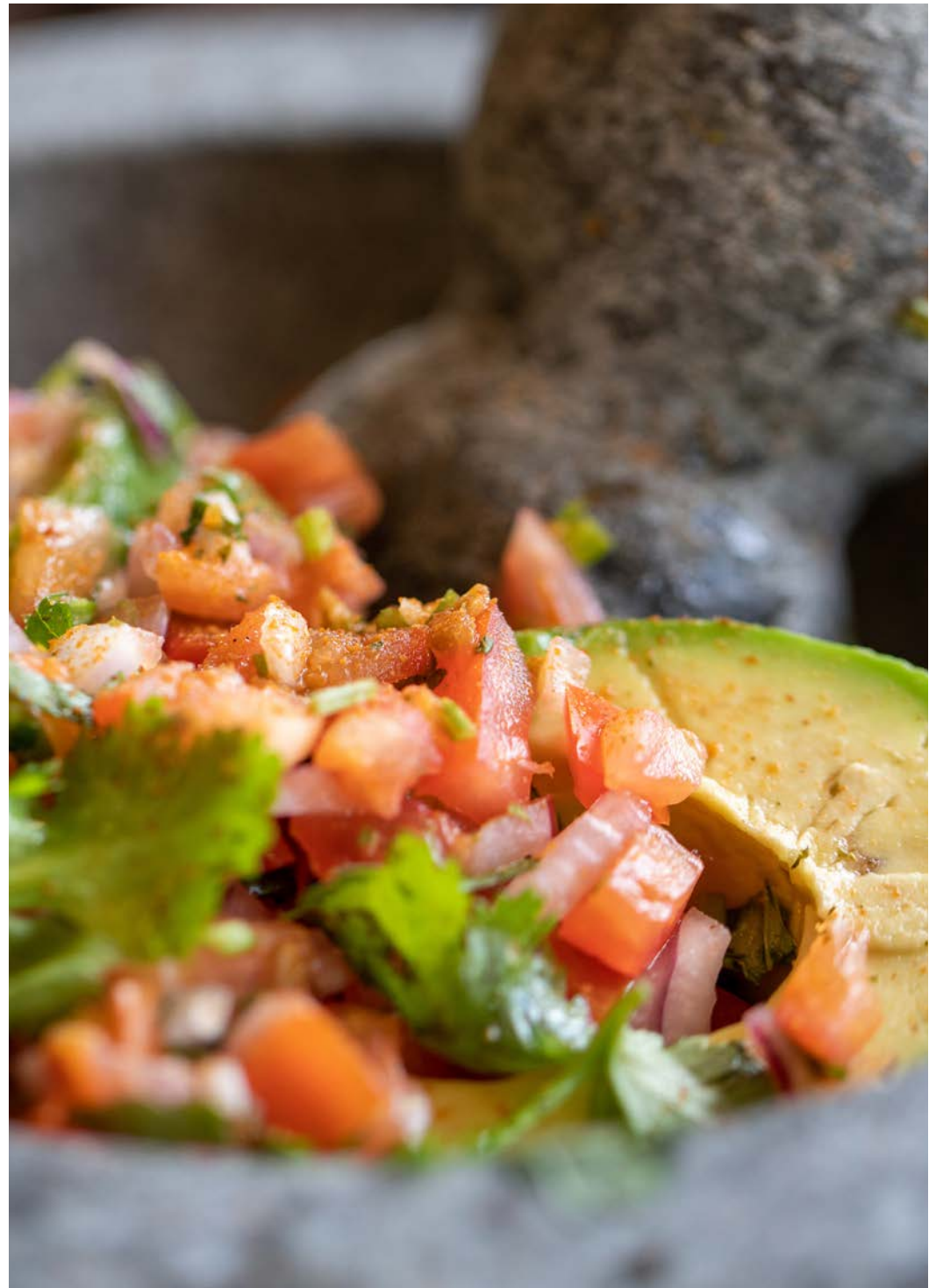
Chilli salt calamari, herbs + aioli

Falafel bun with hummus + zataar

Empanadas + chimichurri

Popcorn cauliflower with buffalo-style hot sauce

---



---

# SHARED TABLE MENU

---

*Verb: to enjoy something jointly with others;  
to have a portion of something with another or others.*

An abundant spread served family-style on guest tables  
creating a communal and interactive dining experience to graze on.

ENTRÉE + MAIN + SIDES  
MAIN + SIDES + DESSERT  
ENTRÉE + MAIN + SIDES + DESSERT

---

**Entrée** (Choose two)

Tuna crudo with green olives, basil + fried capers  
Hot smoked trout nicoise salad with soft egg, potato, olives, beans + soft herbs  
Burrata, basil + heirloom tomatoes with charred bread  
Sumac beef with hummus, mint + parsley salad + preserved lemon dressing  
Fried pork rillettes with saffron aioli + fennel salad

---

**Main** (Choose two)

Twice cooked pork belly with caramelised apples + fennel  
Hot smoked ocean trout with charred brassicas + saffron butter sauce  
Sumac + garlic roast free-range chicken with chicken gravy  
Pepperberry beef with wild mushroom jus  
Braised kale + ricotta rotolo with sumac butter

---

**Sides** (Choose two)

Wagyu fat potato pave  
Fried green beans + marinated fetta  
Farro salad with charred corn, kale + green goddess dressing

---



---

**Desserts** (Choose two)

Clifton mess - meringue, vanilla cream, passionfruit curd + poached fruit  
The GG - Vovo edition with coconut + raspberry ripple ice cream  
dipped in ruby chocolate + coconut  
Cannoli filled with pistachio ricotta

---

**ADD:**

Antipasto station on arrival  
3 x canapes on arrival  
Food station



---

# TRADITIONAL MENU

---

*Adjective: existing in or as part of a tradition; long-established; in accordance with tradition.*

Your guests will enjoy individually-plated meals served alternate drop.

ENTRÉE + MAIN  
MAIN + DESSERT  
ENTRÉE + MAIN + DESSERT

---

**Entrée** (Choose two)

Tuna crudo with green olives, basil, fried capers

Burrata, basil, heirloom tomatoes with charred bread

Hot smoked trout nicoise salad with soft egg, potato, olives, beans + soft herbs

Sumac beef with hummus, mint + parsley salad + preserved lemon dressing

Fried pork rillettes with saffron aioli + fennel salad

---

**Main** (Choose two)

Twice cooked pork belly with caramelised apples + fennel

Hot smoked ocean trout with charred brassicas + saffron butter sauce

Sumac + garlic roast free-range chicken with chicken gravy, whipped potato

Pepperberry beef, wild mushroom jus + smashed chats

Braised kale + ricotta rotolo with sumac butter

---

**Desserts** (Choose two)

The GG - Vovo edition with coconut + raspberry ripple ice cream  
dipped in ruby chocolate + coconut

Clifton mess - meringue, vanilla cream, passionfruit curd + poached fruit

Flourless chocolate + almond cake with strawberry salad

Coconut pannacotta with chocolate crumb

---



**ADD:**

Antipasto station on arrival

3 x canapes on arrival

Food station

---

# STATIONS MENU

---

*Noun: a place where a specified activity or service is based.*

Our signature experience – customise your own dining experience with the theatre of stations.

Go bespoke and choose 3 x styled food stations for a unique guest experience.

## Choose TWO

---

### Antipasto station

Cured meats, house made dips, pickles, marinated seasonal veg, olives, farmhouse cheese, fresh + dried fruits, artisan breads, lavosh + grissini

### Oyster shucking station

Live oyster shucking station featuring premium oysters from Australian Oyster Coast

### Fresh seafood station

All the fish in the sea – prawns, oysters, crabs, smoked salmon, lemons + condiments

### Bazaar station

Flatbreads, 7 spiced beef, harissa chicken, falafel, baba ganoush, hommus, parsley dip, chilli yoghurt, tabbouli, sumac onions, salted yoghurt, cucumber salad + pickled green chilli

### Street food station

Cooked over hot coals; ginger + soy chicken skewers, pork neck teriyaki skewers, tamari tofu skewers + a melting pot of sauces originating from South East Asia.

Served with soba noodle salad, fresh herb + bean shoots, edamame beans + sweet + spicy pineapple

### Empanadas & quesadillas station

A South-American finish with these warm two-bite selections.



## Choose ONE

---

### Sweets station

Profiteroles, choc praline tarts, cannoli, honeycomb, churros, whipped chocolate, baked cheese cake + pannacotta

### Clifton mess station

Our signature dessert – your way. Smash meringue to order with your choice of toppings; fresh berries, whipped cream, curds, coulis, salted caramel, roasted nuts + the rest!

### Milk & cookies station

The ultimate late night snack. Assorted warm cookies served with shot glasses of flavoured milk.

### Popcorn & shaker fries station

Individual-sized popcorn and shaker fries packs to go!



---

# DRINKS

---

## BAR TAB

Purchase drinks in advance and allow guests to order as they please. Limits and inclusions are set by you and should you wish, may be extended once it has been reached.

---

## CASH BAR

Guests order and purchase their own drinks as they please without any restrictions giving them the flexibility to choose their favourites.

---

## DRINK PACKAGES

Choose from one of our thoughtfully curated drink packages, each designed to offer a variety of beverages to keep your guests happy.

With three different options to choose from, you can elevate your event by selecting a package with more inclusions and a more premium offering.

### THE FREDERICK

5hrs

### THE PERCY

5hrs

### THE GEORGE

5hrs



# DRINKS PACKAGES

## THE FREDERICK

5hrs

- 1 x sparkling
- 1 x red wine
- 1 x white wine
- 4 x draught beers
- 1 x light beer

Tea + coffee

Selection of soft drinks + juices

### Includes:

Yarran Sparkling Cuvée Blanc NV (VIC)  
Naturalis Chardonnay (SA)  
Stonehaven Pinot Noir (SA)

## THE PERCY

5hrs

- 1 x sparkling
- 1 x red wine
- 1 x white wine
- 4 x draught beers
- 1 x light beer

1 x cider

3 x craft beers

Tea + coffee

Selection of soft drinks + juices

### Choose from the following premium wine list:

#### Sparkling

Yarran Sparkling Cuvée Blanc NV (VIC)  
Pike & Joyce Pinot Noir Rosé (SA)  
Usher Tinkler Prosecco (NSW)

#### White Wine

Skillogalee Riesling (SA)  
Soli Sauvignon Blanc Semillon (WA)  
Sunnycliff Pinot Grigio (VIC)

#### Red Wine

Stonehaven Pinot Noir (SA)  
Angove Naturalis Organic Cabernet Sauvignon (SA)  
Yelland & Papps YP Shiraz (SA)

## THE GEORGE

5hrs

- 1 x sparkling
- 1 x red wine
- 1 x rosé
- 1 x white wine
- 4 x draught beers
- 1 x light beer

1 x cider

5 x craft beers

Premium spirits

Tea + coffee

Selection of soft drinks + juices

### Choose from the following premium wine list including international selections:

#### Sparkling

Veuve Clicquot Yellow Label Brut NV (France)  
Bollinger Special Cuvée NV Champagne (France)

#### White Wine

Vavasour Sauvignon Blanc (NZ)  
Cupitt's Estate Pinot Gris (NSW)  
Bellwether Tamar Valley Chardonnay (TAS)

#### Rosé

Chateau L'Escarelle Cuvée Palm Rosé (France)

#### Red Wine

Soul Growers Equilibrium GSM (SA)  
Paringa Estate Coronella Pinot Noir (VIC)  
Bendooley Estate Tempranillo (NSW)  
Angove Warboys Vineyard Shiraz (SA)

### ADD:

Premium Spirits  
Cocktail on arrival  
Drink Stations  
Additional wine selections

*\*Wines are subject to availability*



---

# DRAPER & CO

---

*Minimum spend applies*

---

Five hour venue hire

-

Event Coordination including dedicated events team

-

Bespoke tables and chairs

-

Linen napkins

-

Indulgent glassware, cutlery & crockery

-

Gift table

-

Cake table including cake knife + server

-

Your celebration cake cut & served as platters





---

# FAQs

---

## YOUR QUESTIONS ANSWERED...

### **Is there parking available onsite?**

The Imperial at Clifton has onsite parking for 35 cars and 5 motorbikes.

In addition, your guests are welcome to jump on board The Imperial Express our shuttle bus travelling between Thirroul and Helensburgh. The Imperial Express can pick up and drop off your guests to our venue from a number of designated stops along the coast.

### **Is there nearby accommodation for my guests?**

Set in a tourist location, there's ample accommodation in the surrounding coastal towns. We can help! Let our Events Team provide you with our recommendations!

### **Is entertainment permitted?**

Yes, of course! Live ambient music is permitted and the venue is best suited to a live soloist or duo. We have a list of fabulous artists who perfectly fit the venues vibe and are guaranteed to lure your guests onto the dance floor!





---

# CONTACT

---

Get in touch! Contact our events team to talk over your ideas and make a time to visit the site.

## THE IMPERIAL AT CLIFTON

315 Lawrence Hargrave Drive  
Clifton NSW 2515

Email: [celebrate@theimperialclifton.com.au](mailto:celebrate@theimperialclifton.com.au)

Telephone: 4207 3192

 [facebook/theimperialatclifton](https://www.facebook.com/theimperialatclifton)

 [Instagram/theimperialatclifton](https://www.instagram.com/theimperialatclifton)

—  
THE  
**IMPERIAL**  
—  
CLIFTON

